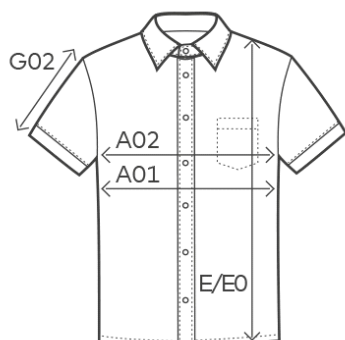


6900

## Men's Oxford Shirt



## measurement table (cm)

	S	M	L	XL	XXL	XXXL	4XL	5XL
_A	37,38	39,4	41,42	43,44	45,46	47,48	49,5	51,52
A01	53	56	60	64	68	72	78	84
E	77	79	81	83	86	89	92	95
G02	25	26	27	28	29	30	31	32

\_A COLLAR WIDE SIDE

A01 1/2 CHEST

E BODY LENGTH

G02 SLEEVE LENGTH

## colours



00/white

11-0601 TPX /TCX



CA/charcoal

18-0306 TPX/TCX



RO/rosa

12-2905 TCX



SY/sky

17-4027 TPX/TCX



## product

6900

Men's Oxford Shirt

## material

60 % cotton, 40 % polyester

## weight

125 g/m<sup>2</sup>

## sizes

S-5XL

## care instructions



## packaging units

Unit = 1 piece.

Carton = 20 pieces.

Sizes and weights + /- 5%. Subject to amendment.



6900

## Men's Oxford Shirt

**product description**

Short sleeve shirt, kent-collar, button panel with tone-in-tone buttons, double back yoke, curved hem, neutral size label, separate chest pocket, easy-care mixed fabric, oxford, easy care finishing, wash 60° C, spare button, 60 % cotton, 40 % polyester, 125 g/m<sup>2</sup>, S-5XL.  
Classical single packing.

**short description**

Classic oxford short sleeve mixed fabric shirt with reinforced kent collar and button panel with tone-in-tone buttons as well as a separate chest pocket and spare button. The specific features of this shirt: easy care mixed fabric, double back yoke, curved hem, produced of combed cotton with polyester. The shirt has a modern cut. Classical single packing.

**properties**

- outstanding washing results at 60° C as well as suitable for tumble drying
- wide range of sizes from S – 5XL
- no promodoro label for easy rebranding
- particularly easy-care due to easy-care finishing

Sizes and weights + /- 5%. Subject to amendment.



 **promodoro**<sup>®</sup>